

## TECHNICAL DATA SHEET

### DESCRIPTION: MONOCLONAL, CYTOMEGALOVIRUS (CMV), IMMEDIATE EARLY (IE) 1&2

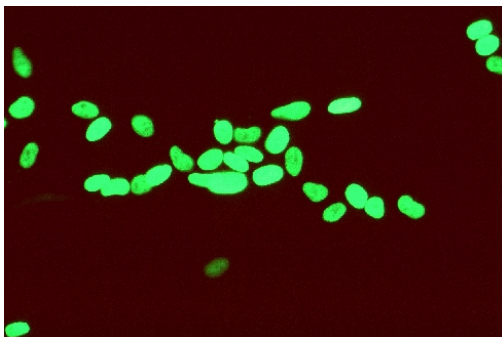
#### PRODUCT INFORMATION

<b>Catalog Number:</b>	<b>A-10023</b>
<b>Storage Conditions:</b>	<b>2° - 8° C</b>
Clone Designation:	10F8
Concentration:	1.0 mg/ml
Volume:	0.1 ml
Total Quantity:	100 µg
Isotype:	IgG 1
Format:	Protein G purified immunoglobulin from cell culture supernatant fluid
Form:	Liquid; in High-salt (0.25M) PBS, pH 7.0 - 7.5
Preservative:	5-BROMO-5-NITRO-1,3-DIOXANE, 0.2%

#### BACKGROUND

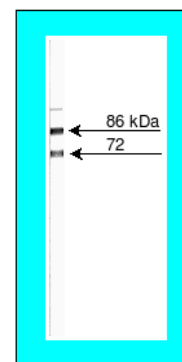
Human cytomegalovirus is a member of the family Herpesviridae, and is in the betaherpesvirus subfamily. CMV is an enveloped, double-stranded DNA virus. Virions have a diameter of 200 – 300nm and contain an icosahedral nucleocapsid, embedded in an amorphous tegument (matrix) surrounded by a phospho-lipid rich envelope. Viral replication occurs in the nucleus of the host cell after delivery of the viral genome and involves the expression of immediate-early, early and late classes of genes. The immediate early proteins have a significant effect on host cell and play a critical regulatory role in infection.

#### Indirect Immunofluorescence Assay:



CMV AD-169 infected MRC-5 cells, 24hr PI  
Primary antibody, Anti CMV, 10F8, 5µg/ml

#### Western Blot:



CMV AD-169 infected MRC-5 cell lysate  
Primary antibody, Anti CMV, 10F8, 0.5µg/ml  
Chromophore: TMB

**APPLICATIONS**

ELISA: cell substrate  
IFA  
Western Blot

**COMMENTS**

Antibody detects human CMV protein consistent with immediate early 1 and 2 antigen (72kDa, 86kDa) as determined by western blot

**PRODUCT NOTICES**

Investigator should determine optimal concentration/dilution empirically in the desired application

**SHIPPING CONDITIONS**

Product is shipped on cold pack

**PREPARATION AND STORAGE**

Store at 2° - 8° C

**STABILITY**

Stable for 1 year from date of manufacture when stored as indicated

For research use only. Not for use in human diagnostics or therapeutics.