

TECHNICAL DATA SHEET

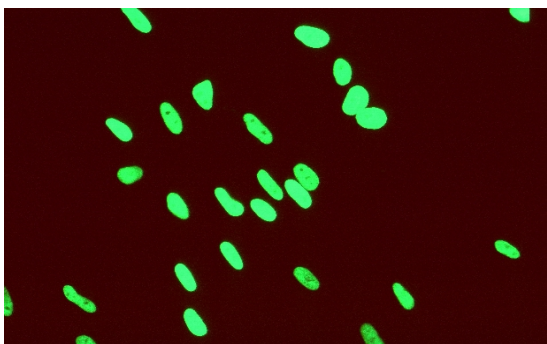
DESCRIPTION: MONOCLONAL, CYTOMEGALOVIRUS (CMV), IMMEDIATE EARLY (IE) 1&2

PRODUCT INFORMATION

| | |
|----------------------------|---|
| Catalog Number: | A-10022 |
| Storage Conditions: | 2° - 8° C |
| Clone Designation: | 6D8 |
| Concentration: | 1.0 mg/ml |
| Volume: | 0.1 ml |
| Total Quantity: | 100 µg |
| Isotype: | IgG 1 |
| Format: | Protein G purified immunoglobulin from cell culture supernatant fluid |
| Form: | Liquid; in High-salt (0.25M) PBS, pH 7.0 - 7.5 |
| Preservative: | 5-BROMO-5-NITRO-1,3-DIOXANE, 0.2% |

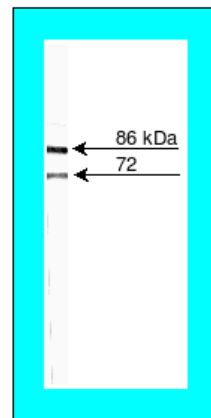
BACKGROUND

Human cytomegalovirus is a member of the family Herpesviridae, and is in the betaherpesvirus subfamily. CMV is an enveloped, double-stranded DNA virus. Virions have a diameter of 200 – 300nm and contain an icosahedral nucleocapsid, embedded in an amorphous tegument (matrix) surrounded by a phospho-lipid rich envelope. Viral replication occurs in the nucleus of the host cell after delivery of the viral genome and involves the expression of immediate-early, early and late classes of genes. The immediate early proteins have a significant effect on host cell and play a critical regulatory role in infection.



Indirect Immunofluorescence Assay:

CMV AD-169 infected MRC-5 cells, 24hr PI
Primary antibody, Anti CMV, 6D8, 5µg/ml



Western Blot:

CMV AD-169 infected MRC-5 cell lysate
Primary antibody, Anti CMV, 6D8, 0.5µg/ml
Chromophore: TMB

APPLICATIONS

ELISA: cell substrate

IFA

Western Blot

COMMENTS

Antibody detects human CMV protein consistent with immediate early 1 and 2 antigen (72kDa, 86kDa) as determined by western blot

PRODUCT NOTICES

Investigator should determine optimal concentration/dilution empirically in the desired application

SHIPPING CONDITIONS

Product is shipped on cold pack

PREPARATION AND STORAGE

Store at 2° - 8° C

STABILITY

Stable for 1 year from date of manufacture when stored as indicated

For research use only. Not for use in human diagnostics or therapeutics.