

TECHNICAL DATA SHEET

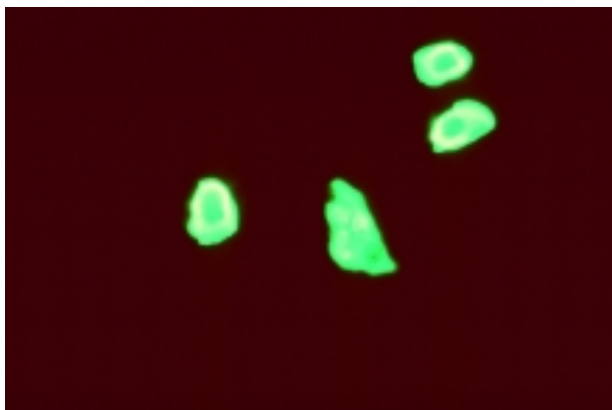
DESCRIPTION: MONOCLONAL, ADENOVIRUS, HEXON

PRODUCT INFORMATION

Catalog Number:	A-10002
Storage Conditions:	2° - 8° C
Clone Designation:	2G9
Concentration:	1.0 mg/ml
Volume:	0.1 ml
Total Quantity:	100 µg
Isotype:	IgG 2a
Format:	Protein G purified immunoglobulin from cell culture supernatant fluid
Form:	Liquid; in High-salt (0.25M) PBS, pH 7.0 - 7.5
Preservative:	5-BROMO-5-NITRO-1,3-DIOXANE, 0.2%

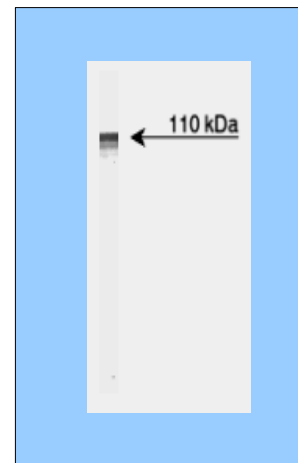
BACKGROUND

Human adenoviruses are members of the family *Adenoviridae*, genus *Mastadenovirus* and are further classified into six subgroups, A - F. To date, fifty-one human adenovirus serotypes have been identified. They are nonenveloped, double-stranded DNA viruses, 70 – 90nm in diameter, icosahedral, with fibers projecting from the vertices of the icosahedron. Virions consist of a DNA core surrounded by a protein shell, the capsid. The capsid is formed from 240 hexon capsomeres and 12 penton capsomeres. The hexons form most of the capsid surface and are located on the triangular faces and edges. The pentons are located at the vertices of the icosahedron and consist of the vertex capsomere base and a projecting fiber with a terminal knob. The hexon, penton base and fiber proteins constitute the major antigenic determinants of adenoviruses.



Indirect Immunofluorescence Assay:

Adenovirus, type 7, Gomen infected A-549 cells, 48hr PI.
Primary antibody, Anti-Adeno, 2G9, 1µg/ml



Western Blot:

Adenovirus, type 7, Gomen infected A-549 cell lysate
Primary antibody: Anti-Adeno, 2G9, 1µg/ml
Chromophore: TMB

APPLICATIONS

ELISA: cell substrate
IFA
Western Blot
Chromatographic immunoassay

COMMENTS

Antibody detects human Adenovirus protein consistent with hexon antigen (109kDa, monomer) as determined by western blot

PRODUCT NOTICES

Investigator should determine optimal concentration/dilution empirically in the desired application

SHIPPING CONDITIONS

Product is shipped on cold pack

PREPARATION AND STORAGE

Store at 2° - 8° C

STABILITY

Stable for 1 year from date of manufacture when stored as indicated

For research use only. Not for use in human diagnostics or therapeutics.